

## NLB1000

Barcode laser scanner

RS232

Keyboard Wedge

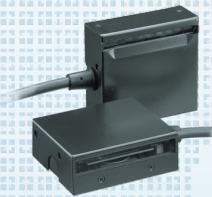
 USB (VCP)

### + Related products



#### RLB1000

- Stationary device
- Barcode raster laser scanner
- RS232, USB (VCP)
- IP 54, Metal diecast



#### NFT7175

- Stationary device
- Barcode CCD scanner
- RS232
- Sheet metal, 700 scans/sec



#### OPM5145

- Stationary device
- Omnidirectional laser scanner
- RS232, Keyboard Wedge, USB (HID/VCP)
- Zinc diecast



## Operating indicators

- Visual: 1 LED (red/green/orange)
- Non-visual: Buzzer

## Communication

- RS232: DB9 PTF connector with external power supply
- USB: Ver. 1.1, VCP, USB-A connector

## Power

- Voltage requirement: 5 V  $\pm$  10%
- Current consumption: Max. 500 mA

## Barcode scanner Optics

- Light source: 650 nm visible laser diode
- Scan method: Polygon mirror
- Scan rate: 1000 scans/sec
- Trigger mode: Manual, multiple read, serial software trigger
- Reading pitch angle: -30 to 0°, 0 to +30°
- Reading skew angle: -60 to -7°, +9 to +60°
- Reading tilt angle: -25 to 0°, 0 to +25°
- Curvature: R>20 mm (EAN8), R>25 mm (EAN13)
- Min. resolution at PCS 0.9: 0.15 mm / 6 mil
- Depth of field: At PCS 0.9, Code 39  
70 - 330 mm / 2.76 - 12.99 in (1.0 mm / 39 mil),  
60 - 270 mm / 2.36 - 10.36 in (0.5 mm / 20 mil),  
60 - 200 mm / 2.36 - 7.87 in (0.25 mm / 10 mil),  
70 - 140 mm / 2.76 - 5.51 in (0.15 mm / 6 mil)

## Supported Symbolologies

- Barcode (1D): JAN/UPC/EAN incl. add on, Codabar/NW-7, Code 11, Code 39, Code 93, GS1 DataBar (RSS), GS1-128 (EAN-128), IATA, Industrial 2of5, Interleaved 2of5, MSI/Plessey, S-Code, Telepen, Tri-Optic, UK/Plessey
- Postal code: Chinese Post
- 2D code: MicroPDF417, PDF417

## Durability

- Temperature in operation: 0 to 45 °C / 32 to 113 °F
- Temperature in storage: -20 to 65 °C / -4 to 149 °F
- Humidity in operation: 5 - 90 % (non-condensing)
- Humidity in storage: 5 - 90 % (non-condensing)
- Ambient light immunity: Fluorescent 4,000 lx max, Direct sun 80,000 lx max, Incandescent 4,000 lx max
- Antistatic electricity: 15kV (non-destructive)
- Drop test: 0.75 m / 2.5 ft drop onto concrete surface
- Protection rate: IP 54

## Physical

- Dimensions (w x h x d):  
29 x 17 x 34 mm / 1.14 x 0.67 x 1.34 in
- Weight body: Ca. 30 g / 1.06 oz (excl. cable)
- Case: Metal diecast, Black

## Regulatory & Safety

- Product compliance: CE, FCC, VCCI, RoHS, JIS-C-6802 Class 2, IEC 60825-1 Class 2, FDA CDRH Class II

## Sold separately

- Power supply 5V/2A (for RS232)

## Models

- Interface versions: RS232, USB

## Conditions

- To be determined: Ordering quantity

Copyright Opticon. All rights reserved. This information is subject to change without prior notice.

- **The Netherlands:** Hoofddorp  
- **France:** ISSY Les Moulineaux CEDEX  
- **Germany:** Dietzenbach  
- **Italy:** Castel Maggiore (BO)  
- **Spain:** Valencia  
- **Sweden:** Järfälla  
- **United Kingdom:** Luton, Bedfordshire  
- **U.S.A.:** Orangeburg, NY - Seattle, WA  
- **Japan:** Warabi City

- **Taiwan:** Taipei  
- **P.R.China:** Shanghai  
- **Australia:** Kariang

Opticon Sensors Europe B.V.  
European headquarters  
Opaallaan 35  
2132 XV Hoofddorp  
The Netherlands  
phone: +31 (0)23-5692700  
fax: +31 (0)23-5638266  
email: sales@opticon.com  
internet: www.opticon.com

**OPTICON**

WWW.OPTICON.COM